




"Paul Fatica "
<faticap@ksassociates.com>
>

03/15/2011 05:08 PM

To <thomas.hyland@dot.state.oh.us>

cc <mhedrick@walshgroup.com>,
<curtice.malone@dot.state.oh.us>,
<eric.s.johnston@att.com>, <jim.breitinger@hdrinc.com>,
bcc

Subject Cleveland Innerbelt Bridge - Utilities - AT&T

History:  This message has been forwarded.

Tom,

Curtice and I met with Eric of AT&T to look at the limits of relocation required and amount of duct. Along West 3rd Street, AT&T will need to remove Overhead from Sta. 33+20+- to Sta. 39+50+-. They will require duct from Sta. 33+20 to a new pole to be set at Harrison Road. This will allow them to keep duct on one side of West 3rd Street without crossing West 3rd. This will cover CCG2 relocation as well. This does not cover the feed to LaFarge. Duct length is approximately 650 LF. They requested 4 ducts. Therefore, 2,600 LF are required here.

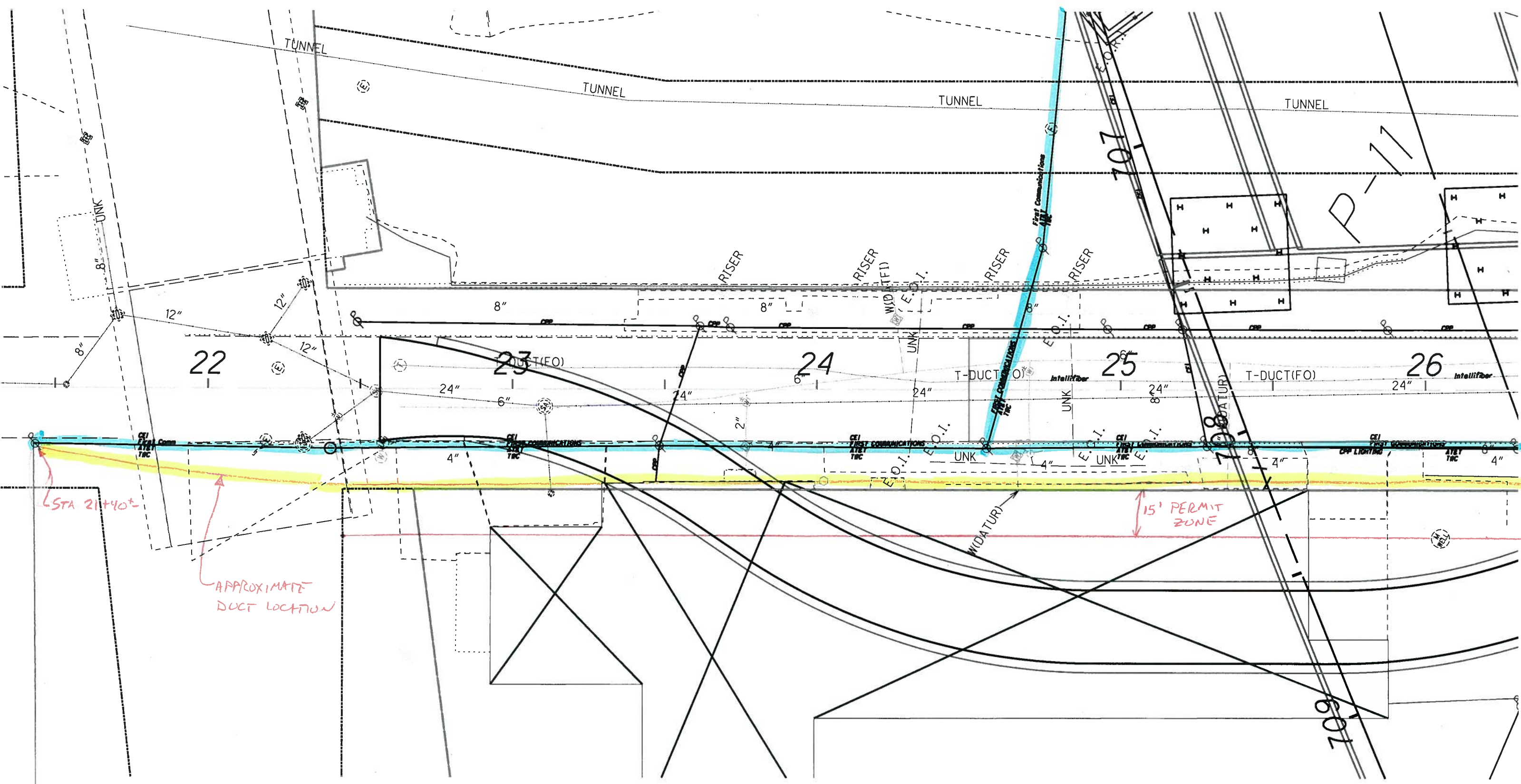
Along Canal Road, AT&T has requested relocating from the first pole north of the Lorain/Carnegie Bridge, approximate Sta. 21+40 to approximate Sta. 30+10 Lt. just south of the existing Innerbelt Bridge. They will demo all Overhead between these two poles and construct duct from a new pole set at approximate Sta. 29+80 Rt. to the pole at Sta. 21+40. The duct will follow the location of the permit zone as designed by CEI. Duct length is approximately 775 LF. They requested 4 ducts. Therefore, 3,100 LF are required.

Attached are sketches showing the locations.

Paul



AT&T West 3rd Street Demo & Ducts.pdf AT&T Canal Road Demo & Ducts.pdf



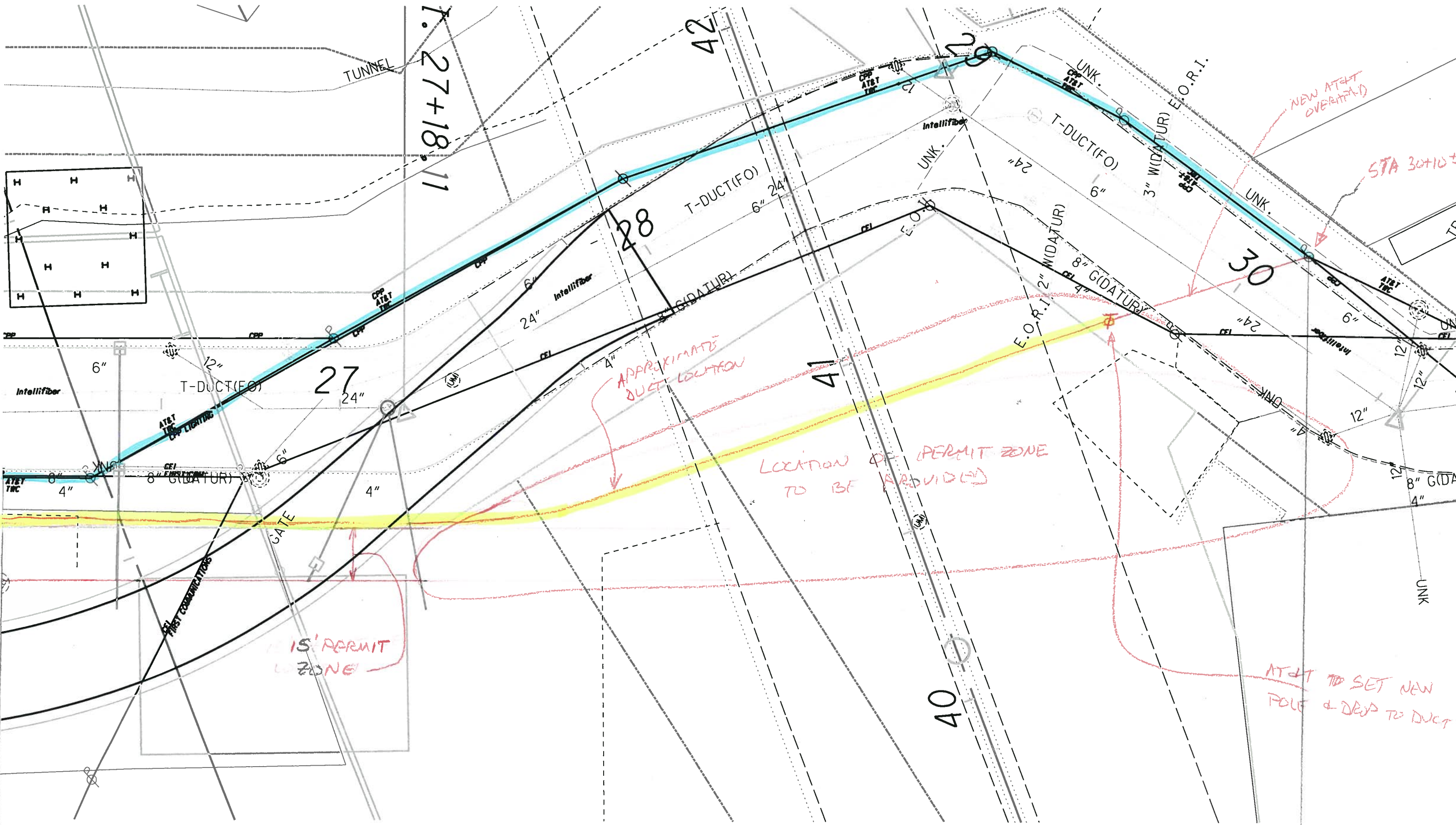
STA 21+40±

APPROXIMATE
DUCT LOCATION

15' PERMIT
ZONE

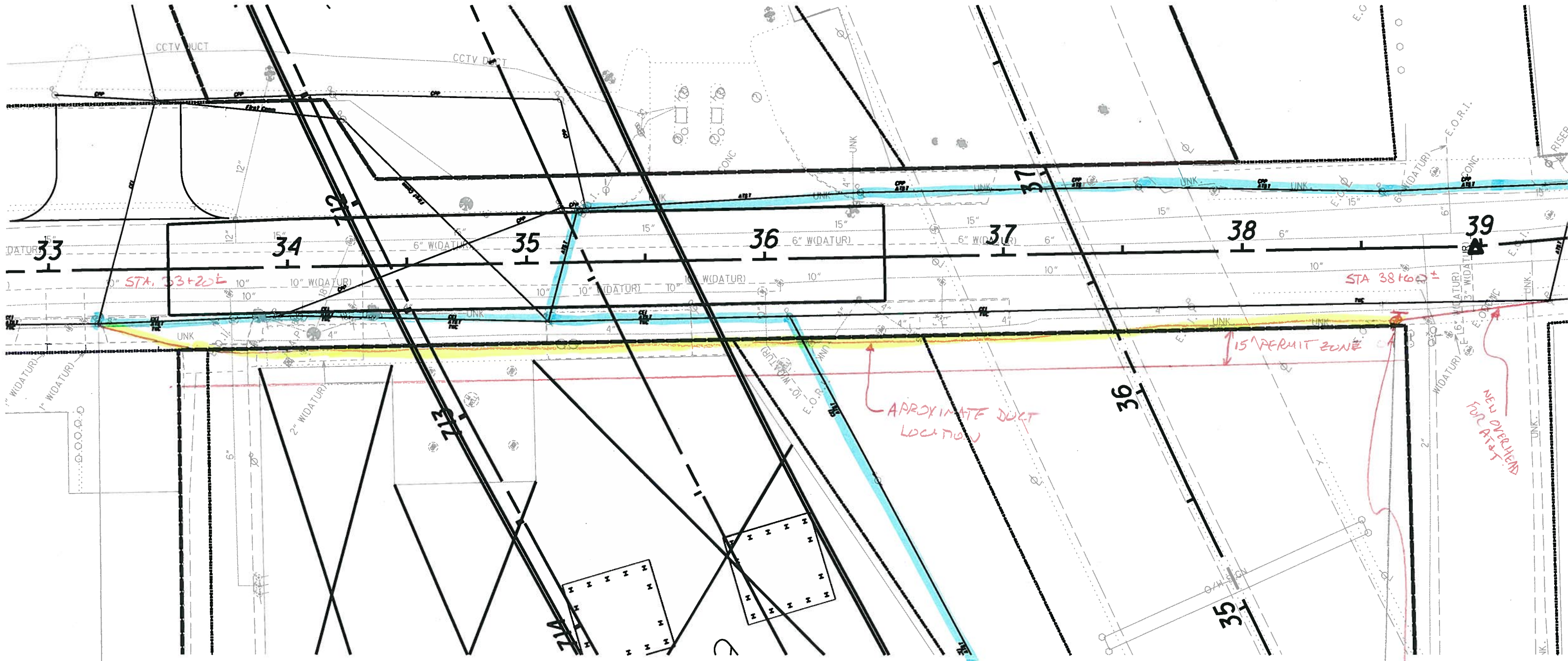
ATLT TO REMOVE OVERHEAD IN BLUE
LIMITS OF PROPOSED DUCT REQUIRED : (SEE NEXT SHEET)

SCALE = 1" = 30'



AT+T TO REMOVE OVERHEADS IN BLUE
 LIMITS OF PROPOSAL DUCT REQUIRED: $\approx 775' \times 4 \text{ DUCTS} = 3,100 \text{ LF}$

SCALE: 1"=25'



AT&T TO REMOVE OVERHEADS IN BLUE
 LIMITS OF PROPOSED DUCT REQUIRED: 2 650' x 4 DUCTS = 2600 LF DUCT

AT&T TO SET
 NEW ROLL
 + DROP INTO
 DUCT